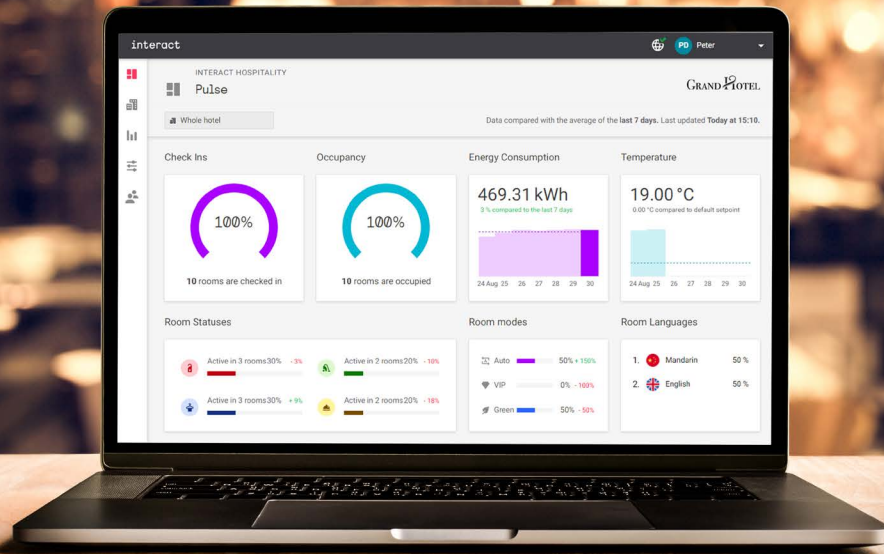


interact



Interact Multiroom System Manager

Enhance experiences and maximize efficiency across your whole property.

Multi-user monitoring and management tools for room-centric properties including hotels, resorts, managed residential and senior living.

Intuitive browser-based dashboards empower your whole team with a range of capabilities, including real-time visibility and control of services such as lighting, HVAC, drapery, and fans alongside rich historical reporting.

View and manage spaces across your property, from rooms and residences to food and beverage, leisure facilities, facade, and landscape.

Smart state control delivers energy management through real-time occupancy and scheduling, while seasonality ensures that your spaces are comfortable all year round.

Continuous monitoring of conditions, service delivery, and system health provides proactive alerts when something needs your attention.

Secure integrations synchronize data and events to condition spaces as needed, and share intelligence to help your teams work smarter.



Key Features



Real-Time Visibility & Control
Remotely monitor and control all services and spaces across your property from a single unified view.

Rooms, residences, outlets, facilities, and exteriors are logically arranged for intuitive access, while multi-building scalability supports larger and distributed developments.



Occupancy, Schedules & Seasons
Use real-time occupancy in rooms and residences to deliver reliable automated energy savings without impacting comfort.

Automatically transition between states throughout the day with schedules, and across the year with seasonality.



Integrations & Connectivity
Our secure APIs enable next-generation user interfaces including apps, tablets, IPTV, and voice control for personalized convenience.

Automation of energy savings, comfort, and the assignment of alerts and tasks is possible through our certified integrations with property management, access control, and operations systems.



Proactive Monitoring & Alerts
Protect your assets and ensure optimal experiences with monitoring and alerts.

Easily define safe condition ranges and elapsed times, then receive proactive alerts whenever thresholds are exceeded.



Historical & Energy Reporting
Access rich historical data and compare dates or areas to understand behaviors, performance, and requests.

View energy consumption categorized by lighting, power, or HVAC for a building, floor, or single room/space, filtered by date or unique stay.



Security & User Permissions
With end-to-end encryption across the network and the database, your data is always secure.

Single sign-on helps to ensure that logins are always policy-compliant, while profile-based permissions allow users to access only the features or areas of the property they need.



Self-Management Tools
Self-manage settings and defaults for your property. Templated updates enable

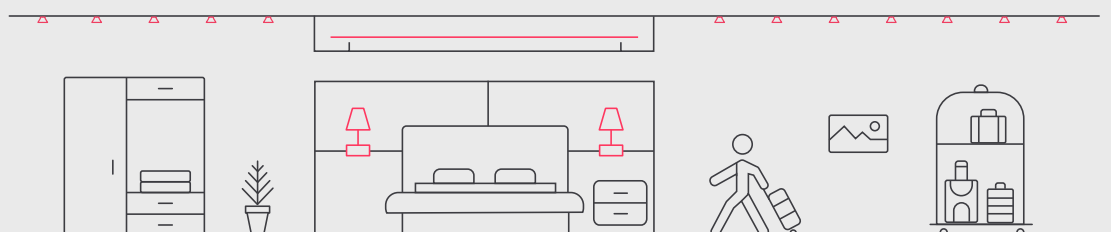
automated deployment of systemwide changes.

Feature Matrix

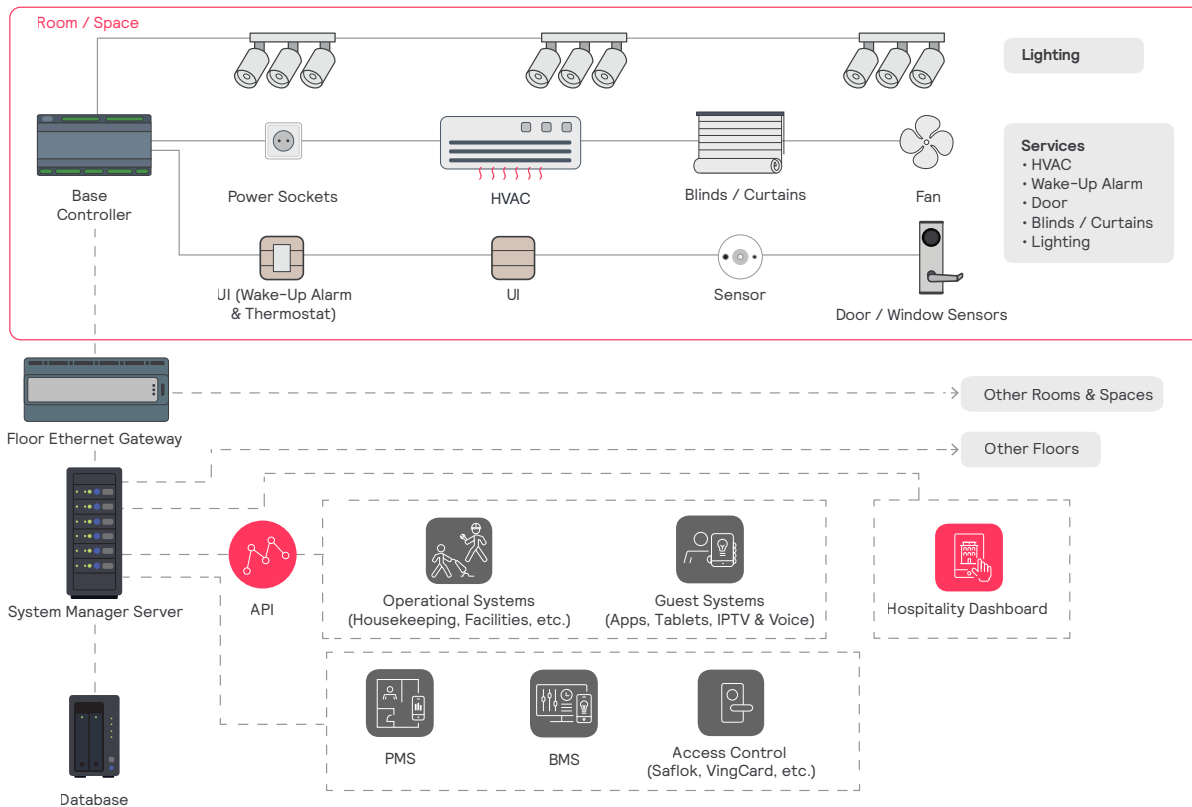
		Standard	Advanced
Central Visibility & Control	Real-time visibility and control of all rooms, suites, and public areas	✓	✓
	Scheduling visibility and management for public areas	✓	✓
Proactive Room Alerts	Dashboard alerts for exceptions (device offline, elapsed status, high temp, etc.)	✓	✓
	Proactive email alerts for configurable room alerts	✓	✓
Reporting	Historical reporting		✓
	Energy reporting		✓
	Custom report builder		✓
	Data export – select and export room historical data	✓	✓
Maintenance	Self-management tools to update room defaults	✓	✓
	DALI light point monitoring and pairing tools	✓	✓
Integrations	Property Management System (Oracle Opera, Infor, Amadeus, Oasis)	✓	✓
	Access Control System (Saflok, VingCard)	✓	✓
	API for operational integration (FCS, Messagebox, Knowcross)	✓	✓
	API for guest app integration (Tapendium, Hudini, Digivalet, UIB, Hotel apps)	✓	✓
IT & Security	End-to-end TLS 1.2 network encryption	✓	✓
	Single sign-on user authentication (LDAP/S)	✓	✓
	Profile-based user permissions and floor access	✓	✓

Order Codes

Product	Order Code (12NC)
Interact Multiroom System Manager License (Standard)	SW913703029509
Interact Multiroom System Manager License (Advanced)	SW913703029909



System Architecture



Server Requirements

Due to continuous improvements and innovations, specifications may change without notice.

# of Rooms	Hardware	Server	Software	
1-500	CPU	2.7+ GHz, 8+ cores	Server Operating System	Windows Server 2016, 2019
	RAM	16+ GB		
	HDD	1 TB	Dashboard Client Browser (Latest version)	Google Chrome Mozilla Firefox Microsoft Edge Apple Safari
500-1500	CPU	2.7+ GHz, 16+ cores		
	RAM	32+ GB for SM + 32 GB for Database		
	HDD	2 TB		
1500+	Please contact us to discuss your requirements.			

Find out how Interact can transform your business

www.Interact-lighting.com